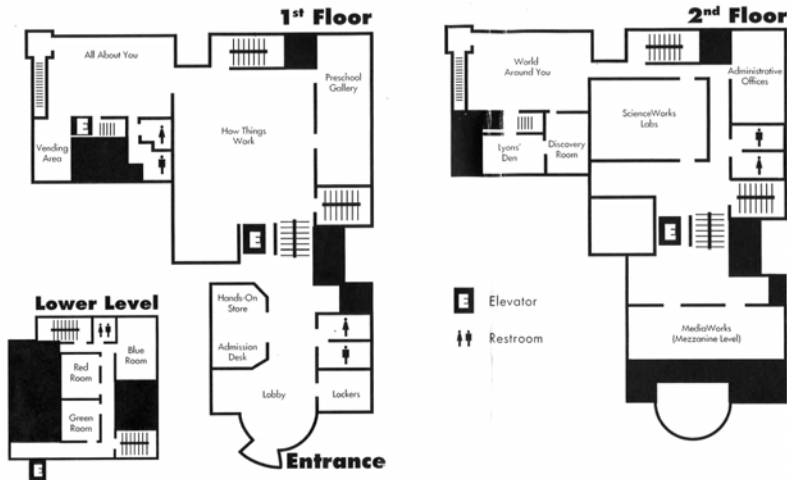
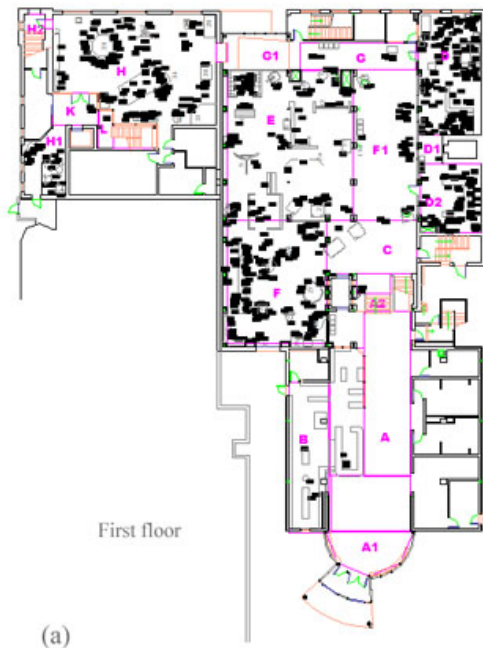


## Visibility, movement paths and preferences in open plan museums: An observational and descriptive study of the Ann Arbor Hands-on Museum



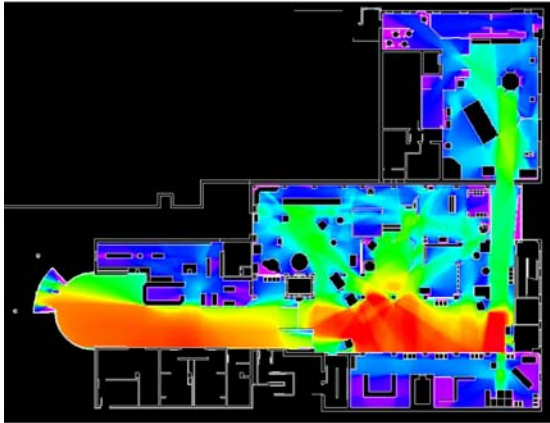
AA-HoM maps used in the museum booklet for guiding the visitors, showing titles of the exhibitions with their locations.



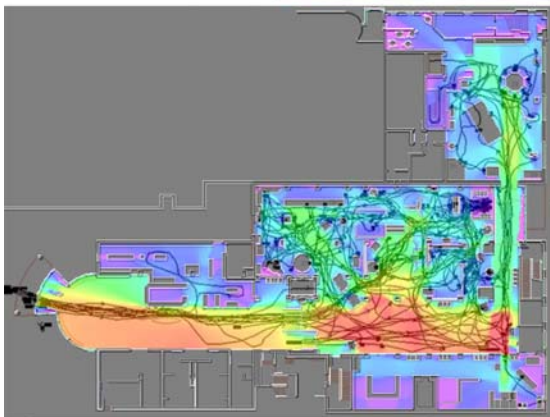
Observation results; (a) Snapshots of stop location



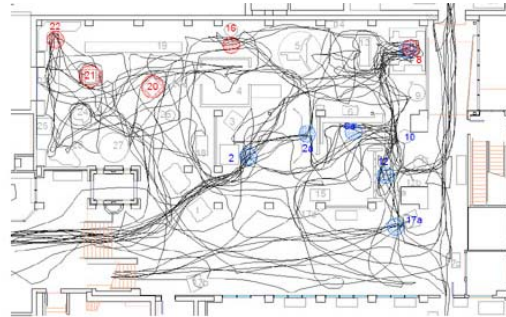
Observation results; (a) Snapshots of stop locations



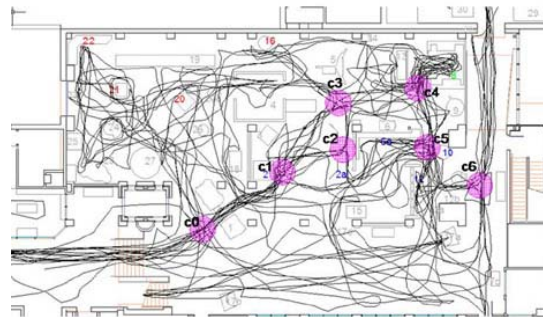
(a)



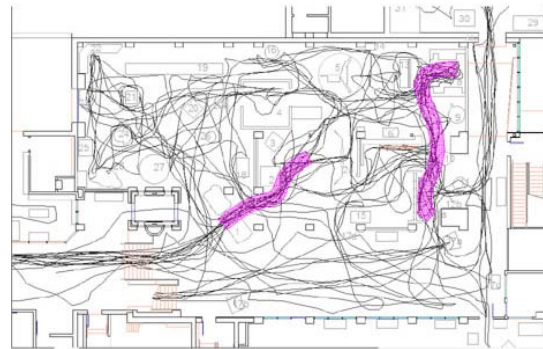
(b)



(a)



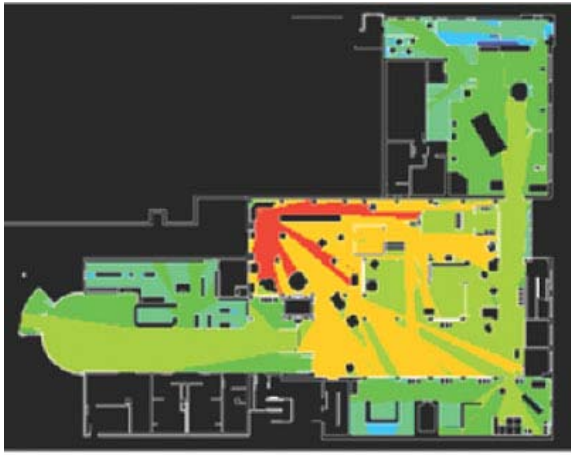
(b)



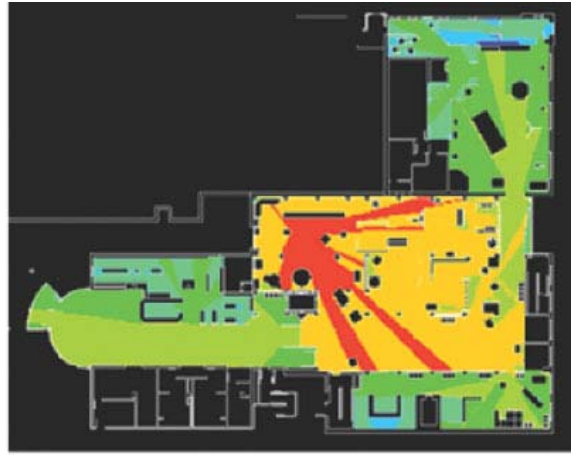
(c)

Visibility graphs on the first floor generated on the basis of neighborhood connectivity measure.

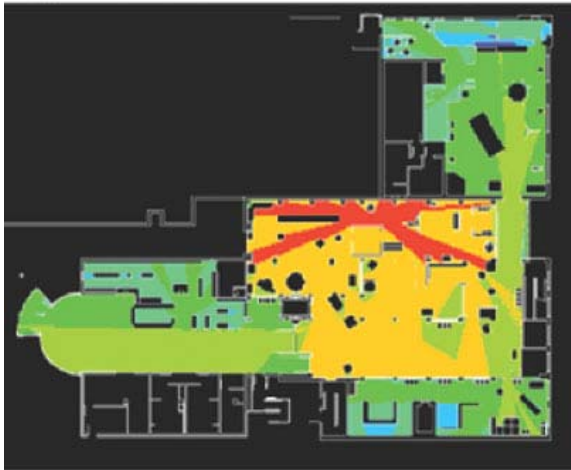
(a) Tracking results in the galleries E and F, display objects with high visit duration and visit frequency marked. (b) Locations where path choice most obviously occurs (c) Confluences in paths.



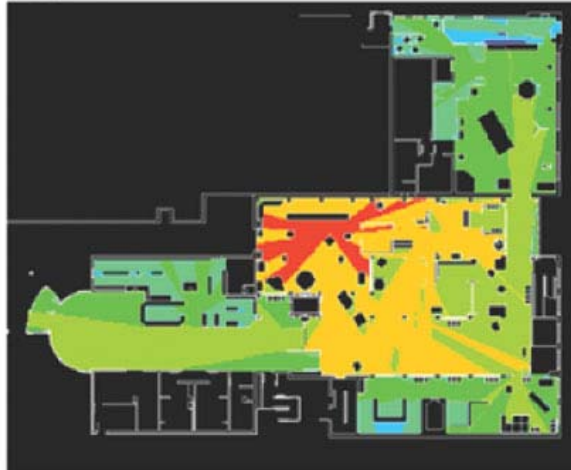
(a)



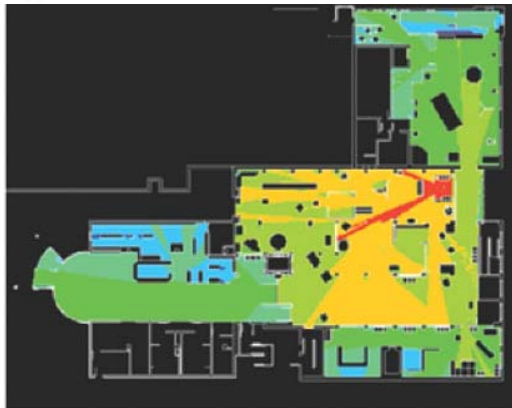
(b)



(c)



(d)



(e)

Point isovist visibility graph at the display objects being visited for longest stop times (or visit duration).



(e)

(f)



(g)